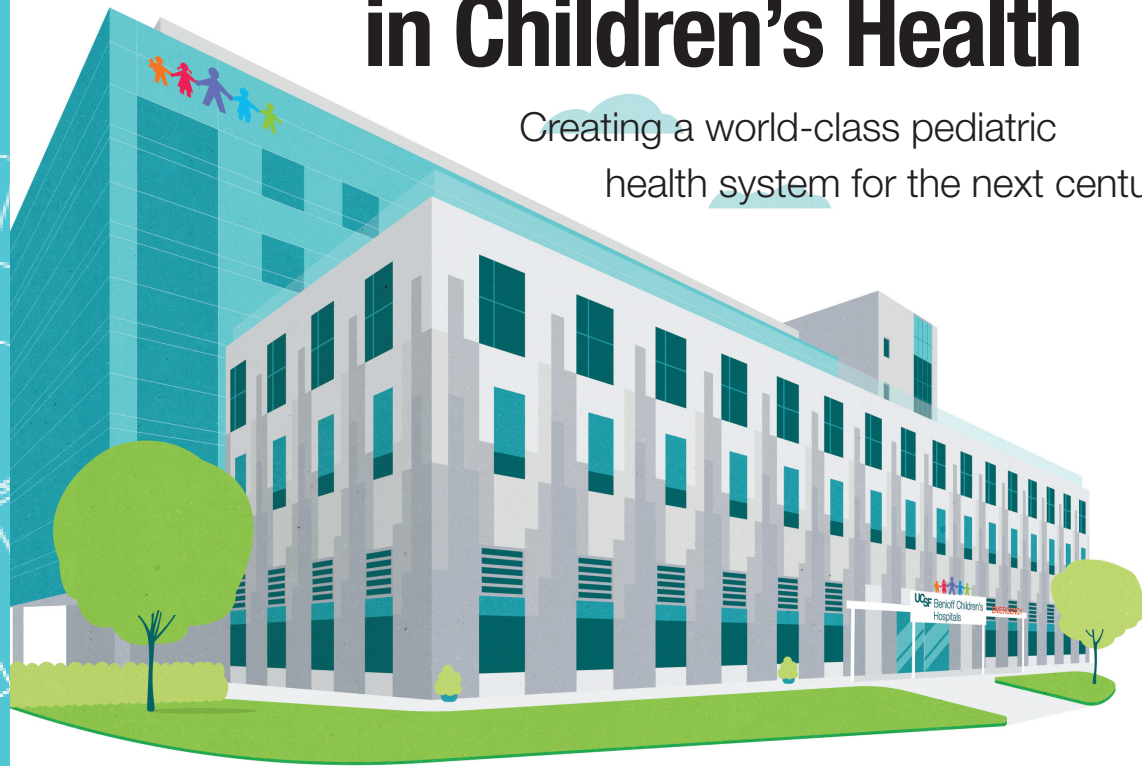


Our Blueprint for A New Era in Children's Health

Creating a world-class pediatric health system for the next century



UCSF Benioff Children's Hospital Oakland has served East Bay families for more than a century and consistently ranks among the leading children's hospitals in the nation. In 2031, UCSF will take our beloved Oakland campus to new heights with the construction of a new hospital building—a state-of-the-art, child-centered medical home for patients from across the Bay Area. The seven-story facility will modernize our Oakland hospital, allowing us to serve more families, accommodate the latest technology, and transform care services to meet the pediatric needs of our local community and the entire region.

Check out some of the key features of our new hospital building:



A Modern Emergency Department

The new and expanded Emergency Department will provide double the current space for the child-centered trauma care that has put our Oakland hospital on the map.



Dedicated Space for Behavioral Health

A newly created, dedicated inpatient behavioral health unit featuring 20 beds will provide essential capacity and services and fill a vital need.



A New Unit for Infants

The brand-new Neonatal Intensive Care Unit (NICU) will feature private rooms, as well as rooms for families with multiple children requiring care.



A Model of Health Equity

Above all, the new hospital building will stand as a rare example of a world-class hospital that serves patients from all economic backgrounds, regardless of their financial circumstances.



State-of-the-Art Surgical Suites

Expanded and modernized operating rooms, including seven new surgical suites, will support the latest technology and care across cardiology, neurosurgery, cancer, and orthopaedics.



More Private Patient Rooms

The number of single-patient rooms will triple – from 39 currently to 137 – with improved, dedicated space for patient and family support.

For more information about how you can contribute, please contact **Jasmine Payne, Assistant Vice Chancellor & Chief Development Officer, Children's Health**, at Jasmine.C.Payne@ucsf.edu.